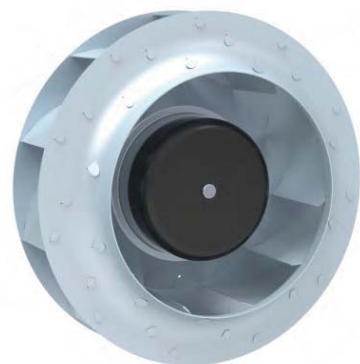


DC Backward Centrifugal Fan with Metal Impeller

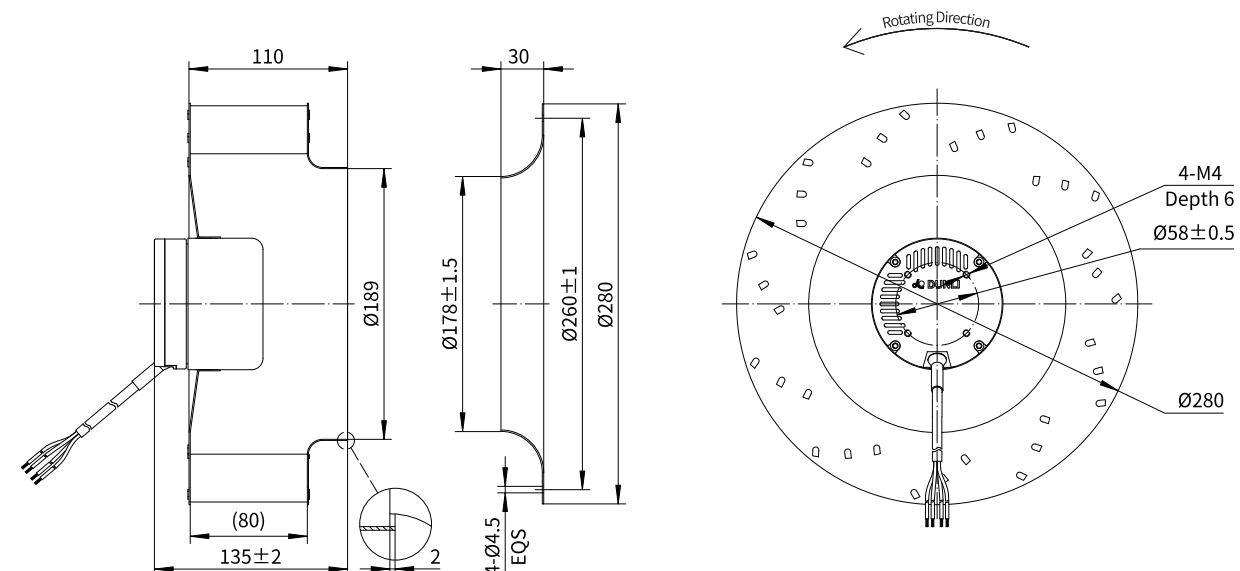
Erp2015
EXCEEDS THE NORM

Motorized Backward Curved Impeller

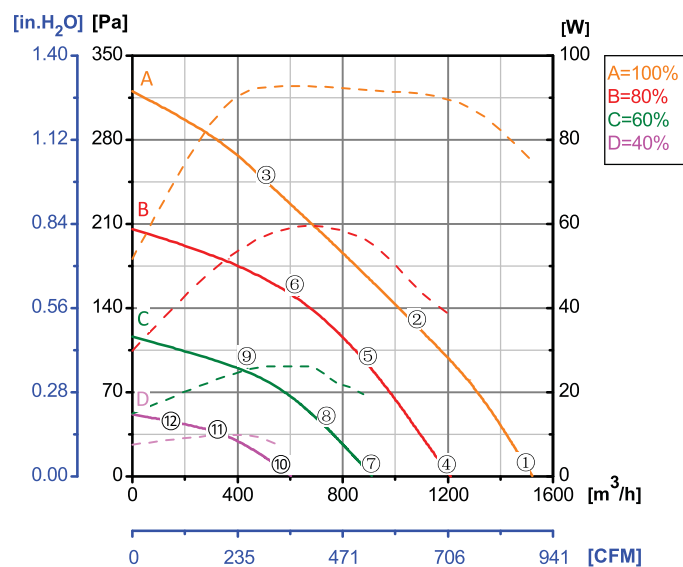


Φ 280

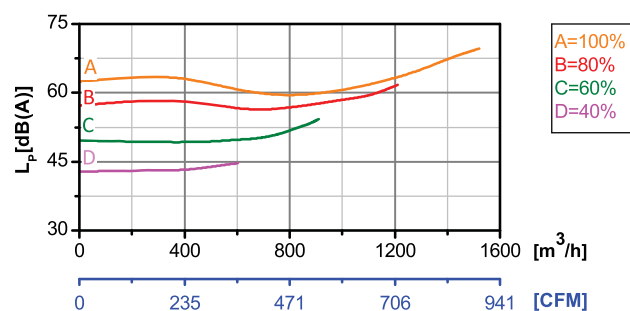
Rotor Material: Carbon steel
Impeller Material: Galvanized steel sheet
Ingress Protection: IP42
Insulation Class: F
Bearing Type: Maintenance free ball bearing



Performance Curves



Test Point	Speed	Input Power
	rpm	W
1	1789	75
2	1697	91
3	1677	93
4	1433	38
5	1427	56
6	1425	61
7	1071	20
8	1073	24
9	1071	27
10	716	8
11	715	10
12	715	10



Erp2015 Data:
Efficiency η_{statA}=51.9%
Efficiency grade N_{actual}=73.3, N_{target}=62
Test report No. : L-20210302-005-084

Model No.	Voltage	Frequency	Speed	Input Power	Current	Working Temp.	Approvals
	VAC	Hz	RPM	W	A	Min/Max (°C)	
DC92-B280-036	24	/	1750	90	3.80	-20/+60	CE
DC92-B280-A36	48	/	1750	90	1.88	-20/+60	CCC,CE
DC92-B280-D36	310	/	1750	90	0.29	-20/+60	CCC,CE