

EC Backward Curved Centrifugal Fan with Aileron Impeller

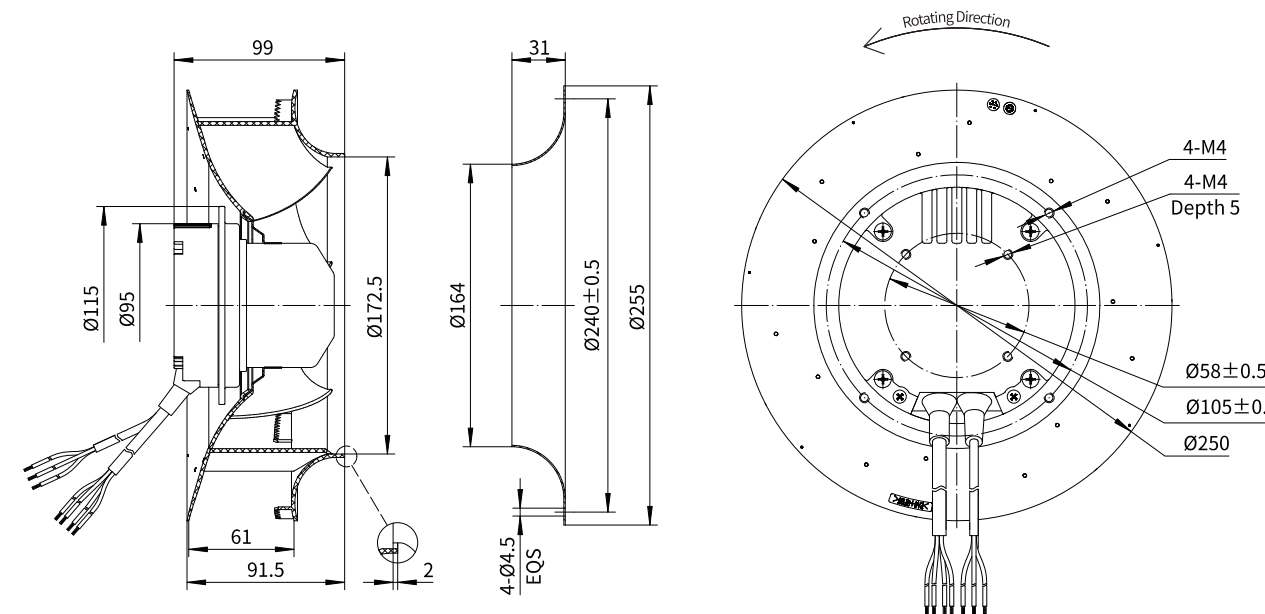
Erp2015
EXCEEDS THE NORM

Motorized Backward Curved Impeller

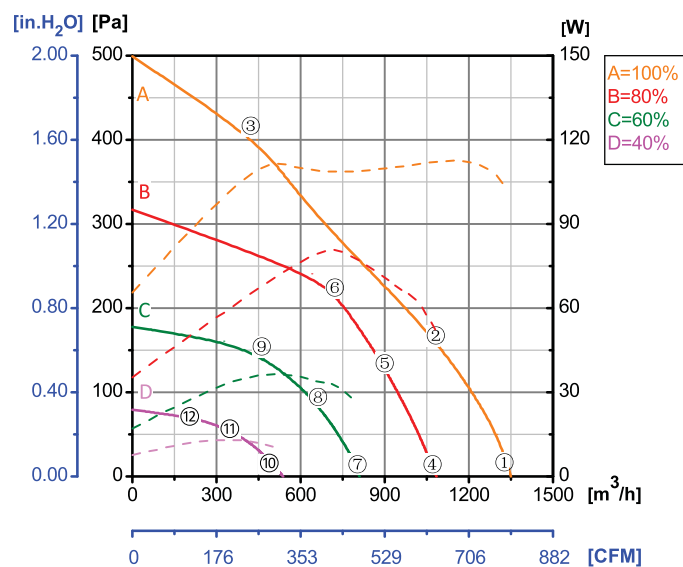


Φ 250-L

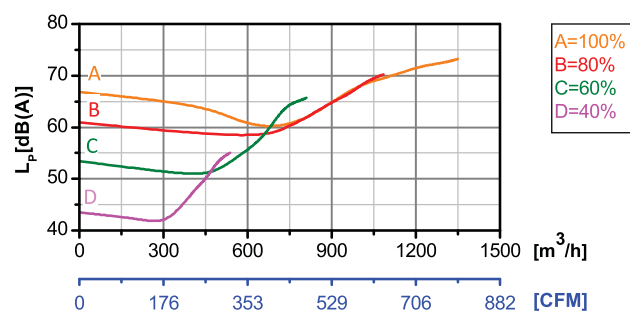
Rotor Material: Carbon steel
Impeller Material: Plastic
Ingress Protection: IP44
Insulation Class: F
Bearing Type: Maintenance free ball bearing



Performance Curves



Test Point	Speed	Input Power
	rpm	W
1	2457	100
2	2343	112
3	2305	114
4	1968	52
5	1970	70
6	1977	81
7	1474	23
8	1502	33
9	1503	36
10	989	10
11	995	12
12	994	13



Erp2015 Data:
Efficiency η_{statA}=61.1%
Efficiency grade N_{actual}=81.7, N_{target}=62
Test report No. : L-20210302-005-009

Model No.	Voltage	Frequency	Speed	Input Power	Current	Working Temp.	Approvals
	VAC	Hz	RPM	W	A	Min/Max (°C)	
EC72-B250-004	1~220/230	50/60	2450	105	0.87	-20/+60	CCC,CE